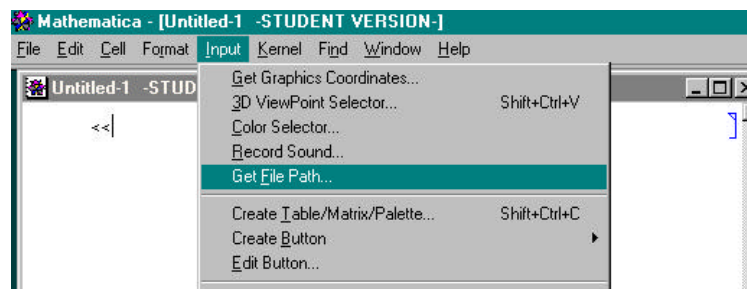


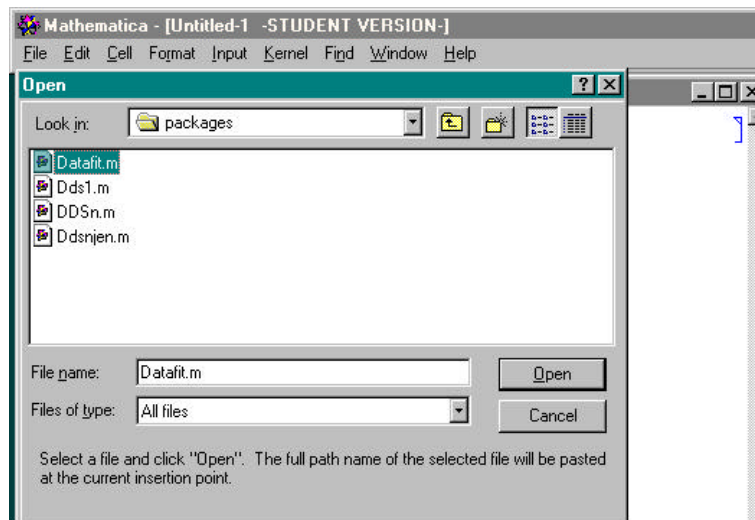
How to Use Packages, Palettes and Help Files in a Lab Setting

The descriptions below assume that you are using the help files, palettes and packages from a floppy or the H: drive. If you want to use these files with your own copy of Mathematica, please refer to the instructions on the web site as to where to install the packages and palette files in order to make things work properly.

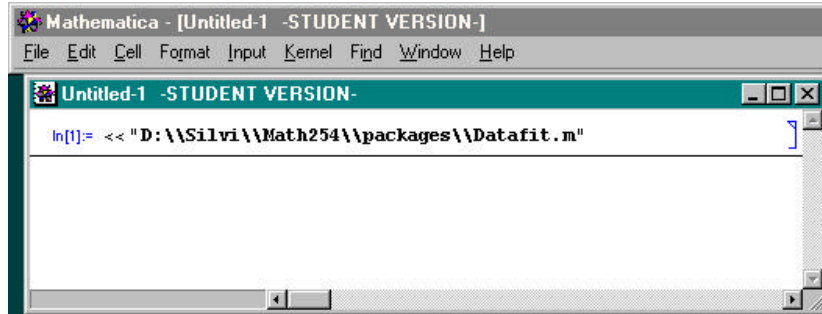
- **Palettes:** The palettes can be opened by either double clicking the file, or by using File → Open. The file will open as a palette and look and work the same way as in class (it just cannot be accessed through File → Palettes). The only exception is the topmost button which loads the package (see below).
- **Packages:** You will not be able to use the topmost button of the palette to load the relevant package into your notebook. Instead, type << into your notebook (as the first thing you do). Then use Input → Get File Path.



This will open a dialog box. Switch to the directory in which you saved the package file (in my case it is the packages folder). Select the respective package, and click Open.



This will paste the file path for the file into the notebook, with quotation marks and possibly double back slashes within the name. (The actual file path depends on the operating system, which is why you should use the Get File Path option instead of typing in the file path directly.) Evaluating the cell will load the package.



Now you can proceed as usual, using any of the palette functions.

- **Help files:** The help files are regular notebooks, and can be opened by either double clicking the file, or by using File → Open. It does not matter where the file is located. However, before using the help files, the cell that loads the package has to be modified (as described above in the section on packages) before the first evaluation of any cell.